



Sew Flunk Fury Wit

## **DUST**

### **- Technical Rider**

**NOTICE: when travelling to destinations within Europe (up to 12 hours total driving time) the company can bring all the scenery in a van, with exception of the sound and lighting equipment, which shall be supplied by the presenter.**

**At the bottom of this rider are listed the materials that also shall be provided by the presenter when bringing the show overseas.**

### THE STAGE

- \* Performing area: depth: 8m / width: 8m / min. height: 4,5m. The size of the performing area is flexible to a certain extent, depending on the specific conditions of the stage.
- \* Frontal setting. The performance can preferably take place on the floor, with the audience placed on a tribune, or and on a stage. In both cases, the audience must have a good view of the stage floor.
- \* Black backdrop - Minimum 2 sets of black side legs.

### RIGGING (stage plan attached)

- \* 3 bars above the stage, preferably at hight 5 meters.
- \* 1 bar above the audience area for front lights.

### SOUND:

- \* Soundsystem suitable for live opera vocals (sopran) and variated backtrack. With a speaker system of front, subs and 2 proff. monitors on stands for the backstage and extra routing of sounds.

### LIGHTING

- DMX To connect the dimmers to our control desk (Qlab system in a laptop).
- DMX connections for 3 LED par lamps shown in the lighting plan (we bring these 3 lamps ourselves)
- 8 x Source Four profiles 750W
- 8 x Fresnell 1000W with barn doors
- 5 x Par64 1000W cp62 • 9 x Floor stands for Fresnell (sidelights)
- Hazer (preferably look Viper 2,6 Fog Machine or a machine with similar effect)
- 24 channel dimmer
- Filter frames
- \* Filters: Rosco 3204 / Lee 202 / Lee 283

(Which filter on which lamp can be seen in the setting plan)

#### TECHNICAL ASSISTANCE:

- \* 2 technician with knowledge of the venue's technical conditions, to help set up and take down lights, sound and scenography. The persons must be available for the theatre, from arrival to departure.
- \* 2 helpers for loading and unloading as well as setting up and dismantling.

#### SET UP / DISMANTLING

- \* Setup time: 8 hours.
- \* Dismantling time: 2-3 hours.

#### BACKSTAGE

- \* 2 Well-lit dressing room with tables, chairs and mirrors as well as clothes rack, in the immediate vicinity of the stage, and close to the toilet and shower.
- \* Drinking water, some fruit and healthy snacks for 4 people in the dressing room will be greatly appreciated.

#### OTHER

- \* Duration of the performance: 70 min.
- \* Target group: 13+
- \* Max number of spectators: 225 pers.

\*\*\*\*\*

#### **MATERIAL TO BE PROVIDED when performing overseas**

- \* Tower construction with iron legs and iron ladder for tower according to attached drawing, photos and specifications (picture 1)
- \* 2 Wodenframes with attached metal stands for standing on the floor. These will be clad in cloth "screens" that the company will be bringing. According to attached drawing, photos and specifications (picture 2).
- \* A burned out tree. Scenographic Aesthetics - is a burned out tree (black burned or painted - paint can not shine, if burnt can not rub!).  
Hight 192 cm. It is mounted on an iron-platform 40x40 cm. Thicknes of ironplate 2-3 mm.  
See photos (picture 3)
- \* 250 kg. of clean (no metal rests or alike) coarse rubber granule shavings, corn size approximately 2x3 mm see photos (picture 4)
- \* 1500 black wooden bricks. About size: Size can vary little bit in lenght, does not have to be precise it can differ in lenght as much as 9,5 – 15. If some piece of wood is not exactly same hight 0,5 - 1 cm difference is ok in hight of broadness.  
Weight: They can be lighter or more heavy does not matter.  
Black Painted with no shine or glitter see photos (picture 4)

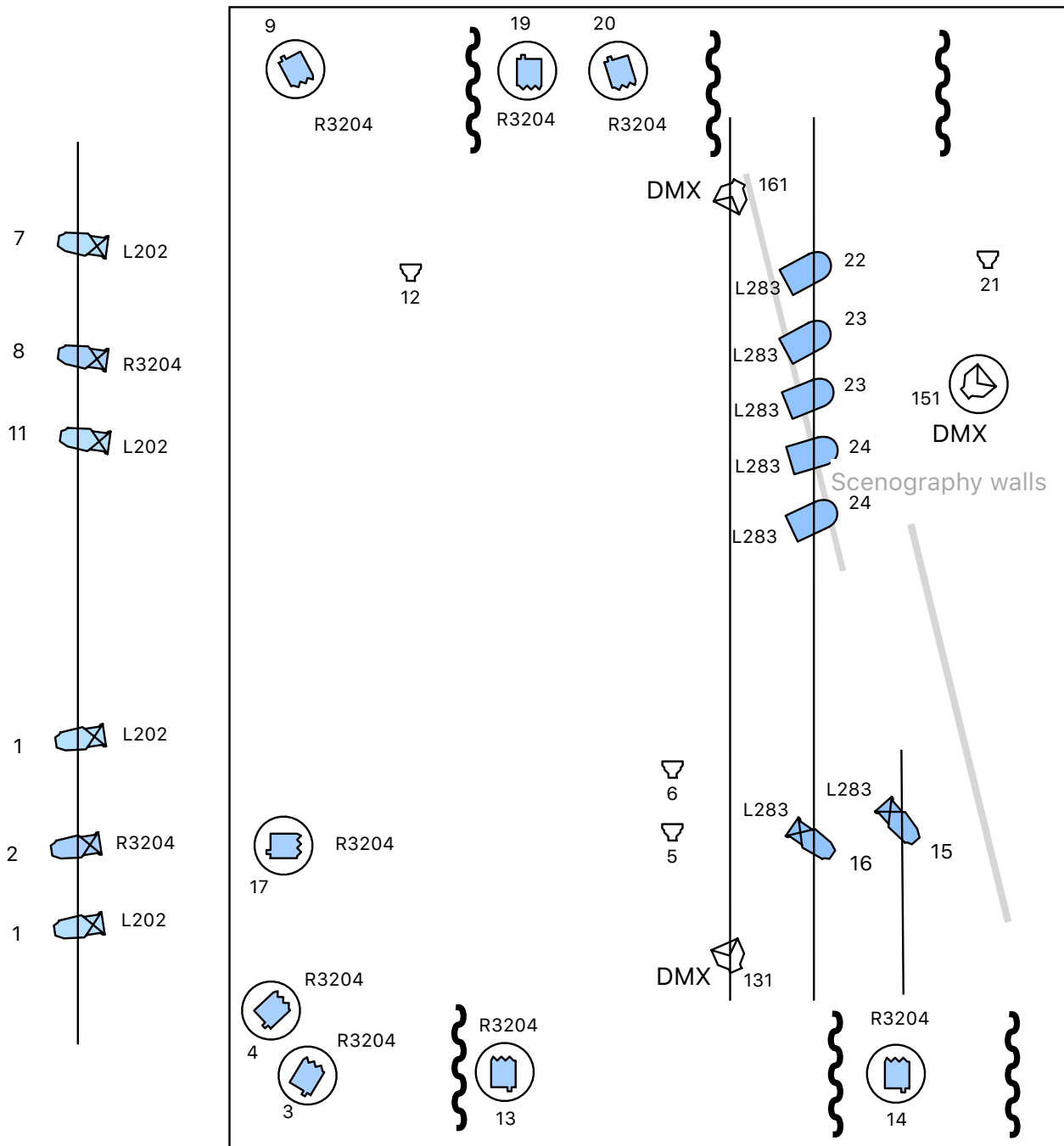
[www.sewflunkfurywit.dk](http://www.sewflunkfurywit.dk)

For further technical questions please contact:

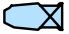




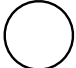
Svend E Kristensen

mobile +45 41564727

mail: [administration@fein-schmecker.dk](mailto:administration@fein-schmecker.dk)



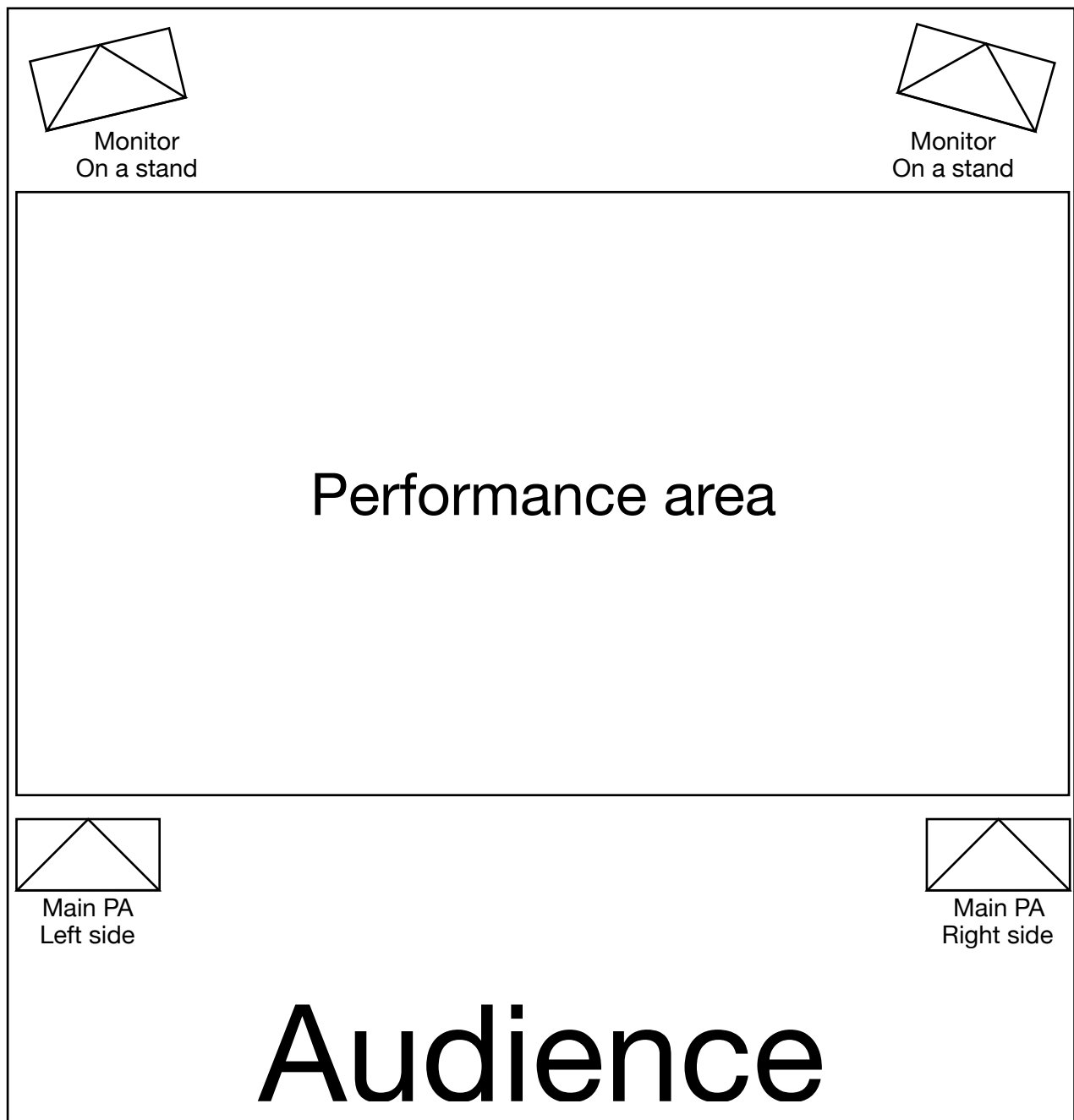
### Lamps

-  8 x Source four profile 750W
-  8 x Fresnell 1000W
-  5 x Par 1000W cp62
-  (3 x 1 ED Par64 RGBW - **we bring these but need DMX**)
-  Female schuko plug on floor (dimmer) We bring the lamps
-  9 x Floor stands

### Filters

- 4 x Lee 202 - 2 x Lee 283 - 2 x Rosco 3204
- 8 x Rosco 3204
- 5 x Lee 283

Figur 1, Lysoversigt samt filtrerings behov



Figur 2, Højtaler placering i forhold til rummet